

£10,000 revamp for forest

BLACKLEY Forest has been given a new look, thanks to a £10,000 grant that paid for a revamp of the entrance.

The Friends of Blackley Forest secured the funding from the British Trust for Conservation Volunteers under the People and Places award scheme, and the money was used to give a makeover to the Blackley New Road entrance, which had an uninviting and derelict appearance.

After installing the new fencing and 800 metres of pathway on the top meadow, the filling, levelling and topsoiling of large dips in the path completed the third phase in the overhaul of the forest, and opened it up to all its users, solving the problem of access for those with mobility problems.

Friends of Blackley Forest secretary John Ashworth said that one local

by Mike Glendinning

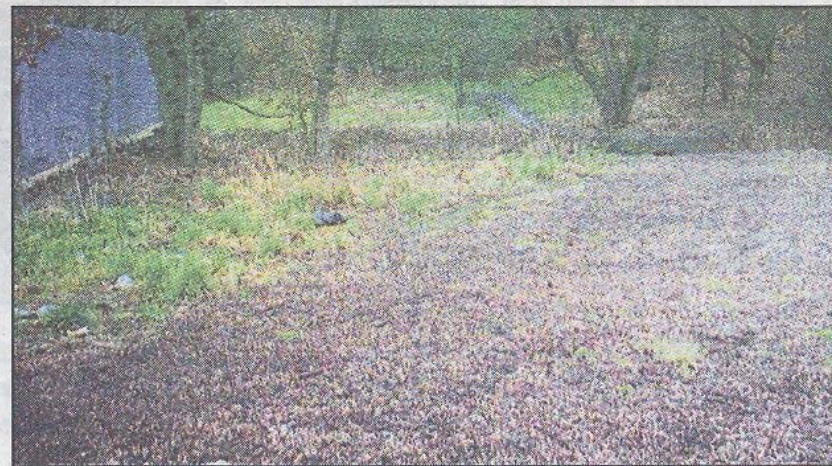
resident, who suffers from Parkinson's Disease, was able to enjoy his first walk around the beauty spot in years and plans are now at an advanced stage for the forest to be designated a local nature reserve early next year.

A wide selection of wild flowers will soon be planted to further define the woodchip path and provide a screen for two power substations at the entrance.

John said: "The transformation gives an appearance of order and belonging, making it more inviting and appealing to visitors who want to enjoy walks in comfort. Next spring, the immediate area will be planted with flowering shrubs and wild flowers to further enhance the aesthetic appearance."



THE new entrance to Blackley Forest



THE way it used to be